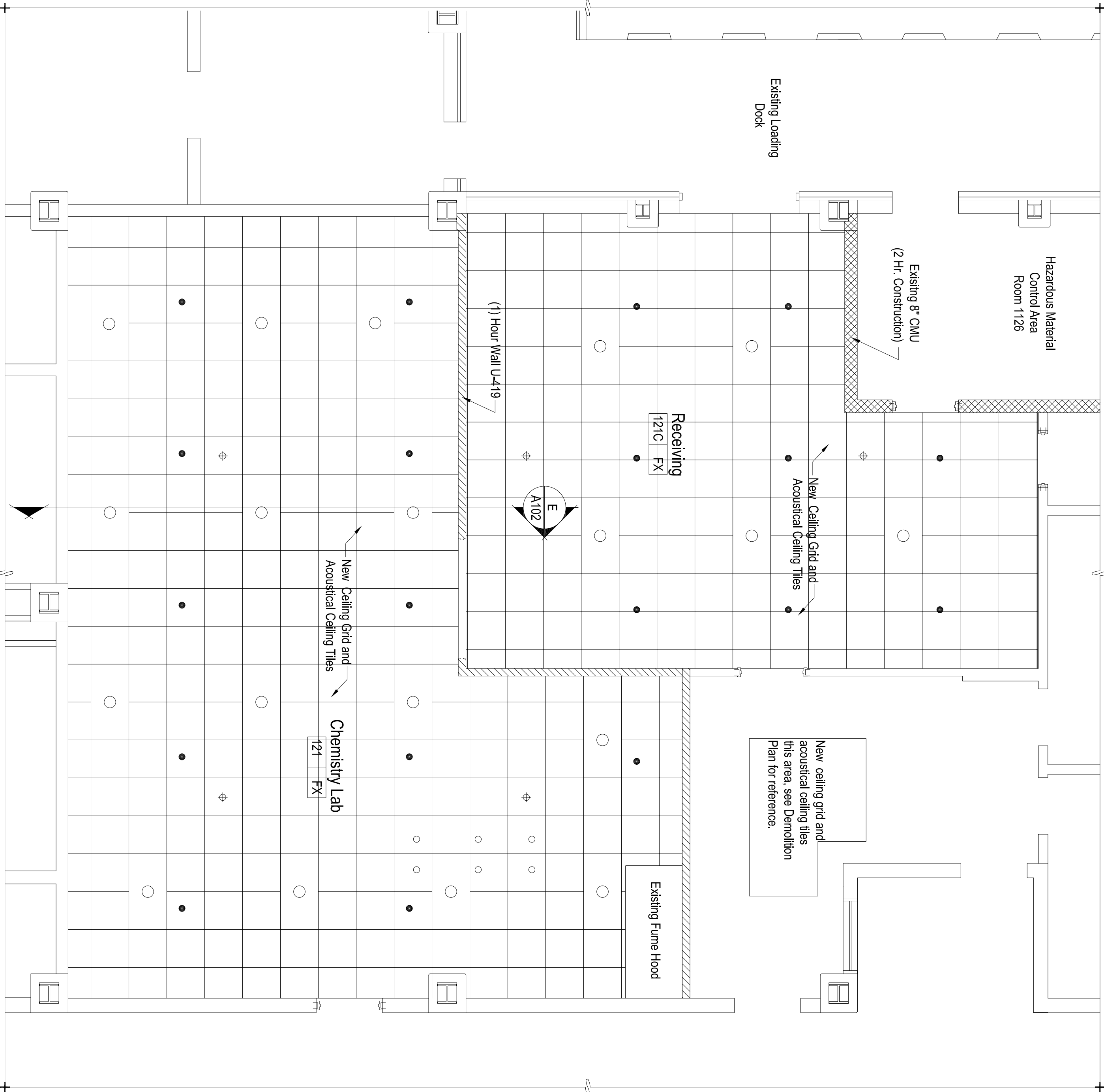


DOOR SCHEDULE

Note: Contractor shall verify all door and frame dimensions in field prior to ordering units. See plan locations for door specific handling and orientation.

DOOR DATA				FRAME DATA				DETAILS			
NUM.	TYPE	SIZE	THK.	MATERIAL	TYPE	MATERIAL	HEAD	JAMB	SILL	HARDWARE	REMARKS
121	A (2)	6'-0" x 7'-0"	1-3/4"	Wood	F1	HM	Below	Below	-	01	"B" Label Door

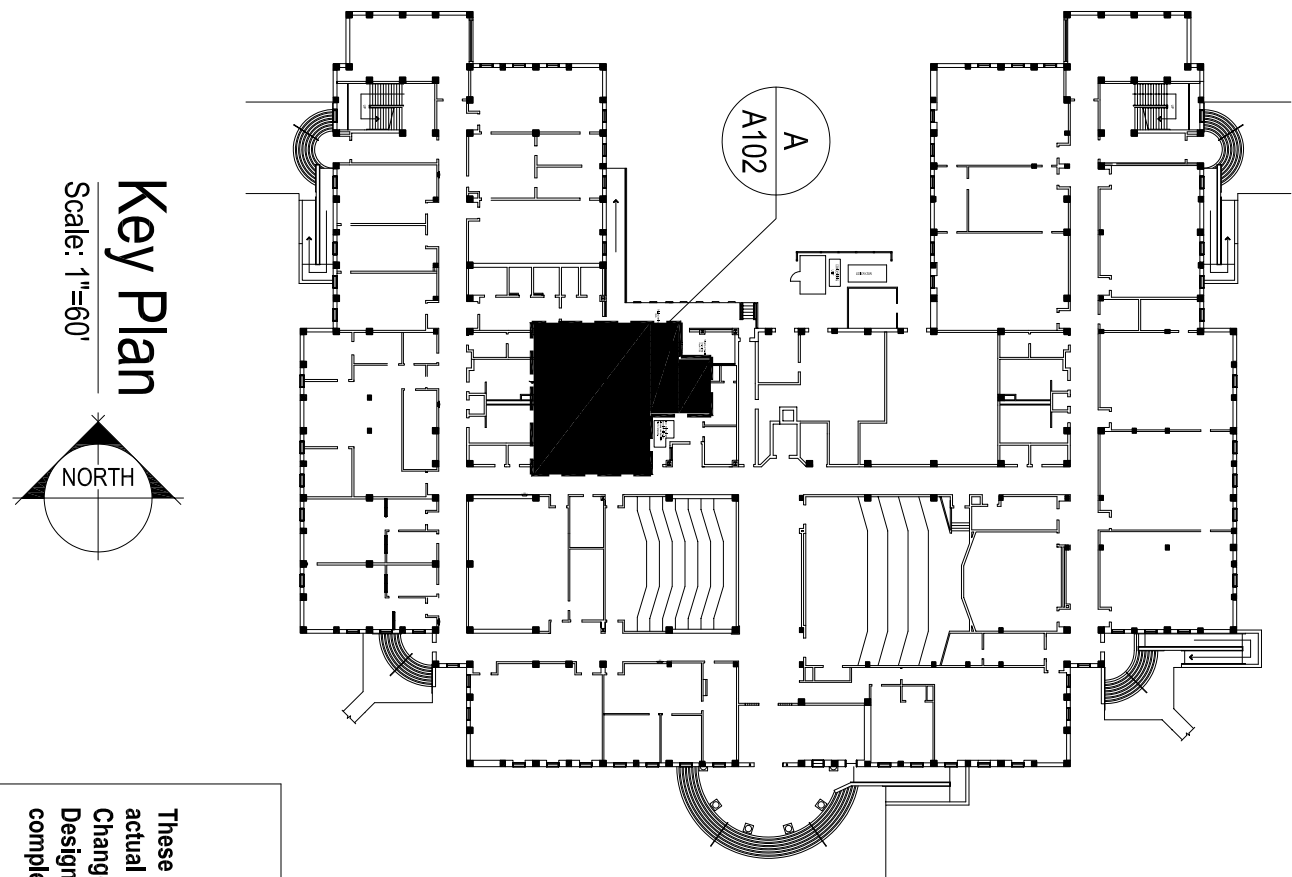
DOOR AND FRAME TYPES				DOOR AND FRAME DETAILS			
DOOR TYPES		FRAME TYPES					
A		F1					



General Notes

- See Mechanical and Electrical drawings for balance of Reflected Ceiling Plan. Coordinate work of other trades with Architectural work.
- Existing fire sprinklers to remain in present locations.
- See Mechanical and Electrical plans for relocation of homestrobe, smoke detectors, 2 x 4 lights, linear diffusers, and grilles.

A  
Reflected Ceiling Plan  
1/4"=1'-0"



Key Plan  
Scale: 1"=60'  
NORTH

Record Drawings

These Drawings were created for the Owner's use. They represent actual installed conditions as indicated by Contractor mark-ups. Change Order's and clarification Sketches issued by the Designer's, to the best of my knowledge they are correct and complete.

Revisions

No.	Date	Description
1	06/15/05	Record Drawings

Project Number

0414.MASS

Date

3/21/2005

Drawn

TJC

Checked

JLW

Scale

As Noted

Drawing Title


Reflected Ceiling Plan

Sheet Number


5 of 12

Drawing Number

A-103

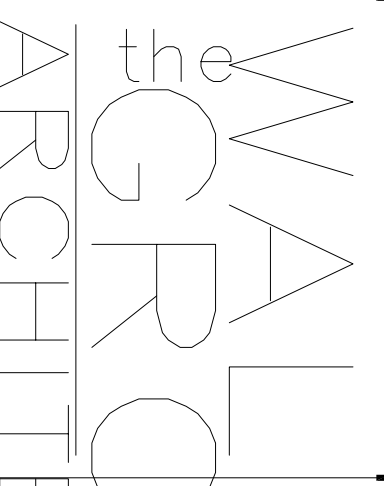


601 South College Road  
Wilmington, NC 28403  
910-962-3000  
www.uncw.edu



Dobo Hall  
Chemistry Lab 121  
Renovation

University of  
North Carolina  
at Wilmington  
602 South College Road  
Wilmington, NC 28403



incorporated  
PO BOX 541, NEW BERN, NC 28563  
252-636-8778 252-636-9920(FAX)

